



DECEMBER 2015

Extremely wet and warm everywhere

Rainfall: double or triple the normal rainfall in nearly all parts

All stations reported well above Long-Term Average rainfall with most stations across the country reporting double or triple their normal rainfall for December. Wettest conditions (compared to LTA) were in county Cork where nearly all stations reported over 300% of LTA. Roche's Point reported the highest percentage of LTA with 342% (340.6 mm of rain) its highest for December since 1955. The majority of stations reported their wettest December on record with exception of some stations mainly in the East and West which reported wetter conditions in 1978 and 1999, respectively. Malin Head, Co Donegal reported its wettest December since 1885 with 273.0 mm (235% of LTA) while Valentia Observatory, Co Kerry reported its wettest December since 1934 with 339.0 mm (206% of LTA). The wettest days were the mainly the 3rd, 5th and 12th with stations in the West reporting daily rainfall totals of around 50 mm or more on the 5th. The month's wettest day was reported at Malin Head on this date with 80.7 mm, the stations wettest day for any month since 1955.

Temperature: warmest December in over 160 years at station in Dublin

All mean temperatures for December were well above their LTA with differences above average ranging from 1.4°C at Markree, Co Sligo with a monthly mean of 7.1°C to 3.6°C at Dublin (Phoenix Park) with a monthly mean of 9.0°C. Dublin (Phoenix Park) reported its warmest December since records began at the site in 1855, while Valentia Observatory equalled its highest since 1893 with 10.0°C (2.3°C from LTA). The majority of stations reported it as their warmest on record with exception of a few isolated stations located in the North, Midlands, West and South. There, it was the warmest December since 1988, and the 2nd or 3rd warmest on record. All highest maxima were recorded between the 16th and 18th, with the month's highest temperature reported at Malin Head on the 17th with 16.0°C, its highest December temperature in sixty years. Most lowest minima were recorded on the 13th, 27th and 31st with the month's lowest temperature reported at Markree on the 13th with -3.1°C. Lowest minima reported at Valentia Observatory and Shannon Airport, Co Clare of 3.7°C and 2.2°C were the highest for December in over 70 years.

Sunshine: Cork reports dullest December in nearly 25 years

Monthly sunshine totals ranged from 19.7 hours at Belmullet, Co Mayo to 48.4 hours at Dublin Airport, its dullest December in 10 years. The highest daily sunshine was 5.5 hours reported at Shannon Airport on the 21st. Cork Airport reported a monthly total of 24.3 hours, its dullest December since 1991 and its fourth dullest in over 50 years. The number of dull days (*days with less than 0.5 hours of sun*) were from 15 at Dublin and Shannon Airport to 23 at Cork Airport.

Wind: three winter storms; Desmond, Eva and Frank

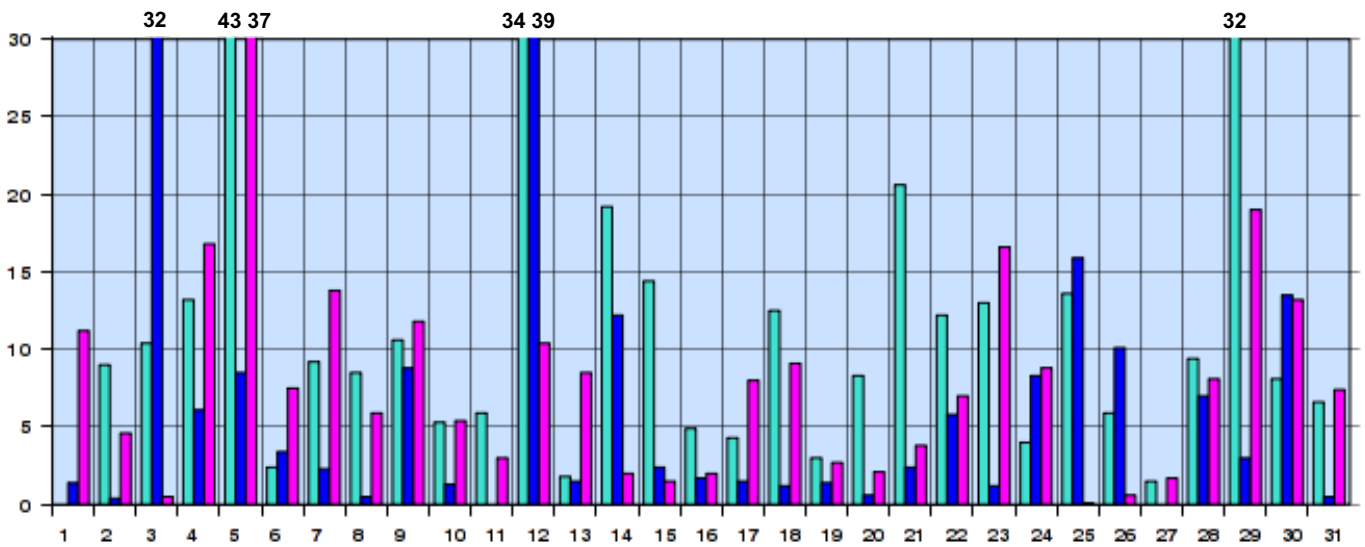
Monthly mean wind speeds ranged from 8.9 knots (16.5 km/h) at Fermoy (Moore Park), Co Cork to 21.8 knots (40.4 km/h) at Mace Head, Co Galway. Over half of stations had their highest monthly wind speeds in six to 28 years with Valentia Observatory and Shannon Airport both reporting their windiest December in 41 years with monthly mean wind speeds of 14.8 knots (27.4 km/h) and 13.3 knots (24.6 km/h), respectively. Four days reported storm force winds with three named winter storms occurring; Storm Desmond (4th and 5th), Storm Eva (23rd), Storm Frank (29th and 30th). The month's highest gust was 73 knots (135 km/h) at Belmullet on the 23rd, its highest December gust since 2002. The highest 10-minute wind speed was 55 knots (102 km/h) at Sherkin Island, Co Cork on the 30th.

EXTREME VALUES AT SYNOPTIC STATIONS

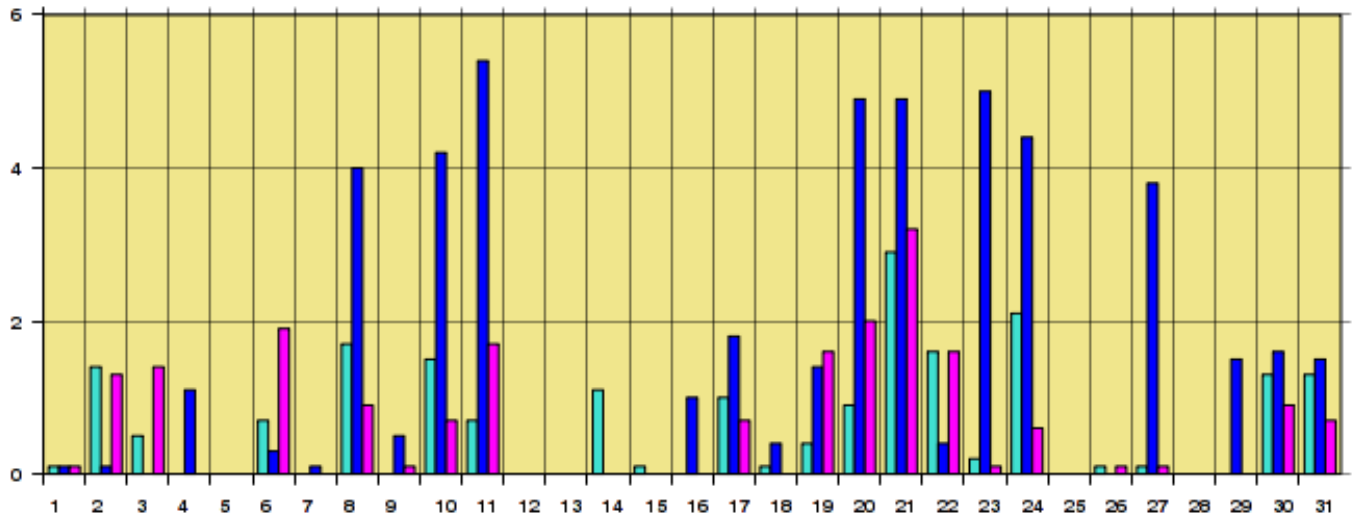
Rainfall	Highest total: 402.2 mm (302% of LTA) at Cork Airport (<i>its wettest December since the station opened in 1962</i>) Lowest total: 193.5 mm (266% of LTA) at Dublin Airport (<i>its wettest December since the station opened in 1978</i>) Highest daily rainfall: 80.7 mm at Malin Head, Co Donegal on 5th (<i>its wettest day since 1955</i>)
Temperature	Highest mean monthly temperature: 10.3°C at Sherkin Island, Co Cork (2.3°C from LTA) (<i>its warmest December since the station opened in 1974</i>) Lowest mean monthly temperature: 6.4°C at Knock Airport, Co Mayo (2.1°C from LTA) (<i>its warmest December since the station opened in 1996</i>) Highest air temperature: 16.0°C at Malin Head on 17th (<i>its highest maximum for December since 1955</i>) Lowest air temperature: -3.1°C at Markree, Co Sligo on 13th Lowest grass minimum temperature: -6.5°C at Cork Airport on 31st (<i>its lowest for December since 2010</i>)
Sunshine	Highest monthly total: 48.4 hrs (daily mean 1.6 hrs/day, 92% of LTA) at Dublin Airport (<i>its dullest December since 2005</i>) Lowest monthly total: 19.7 hrs (daily mean 0.6 hrs/day) at Belmullet, Co Mayo* Highest daily sunshine: 5.5 hrs at Shannon Airport, Co Clare on 21st

DECEMBER 2015 DAILY VALUES AT SELECTED SYNOPTIC STATIONS

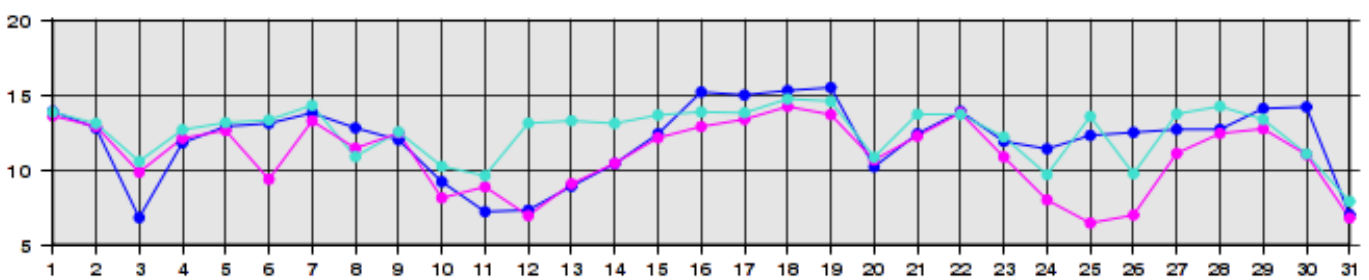
DAILY (midnight to midnight UTC) RAINFALL



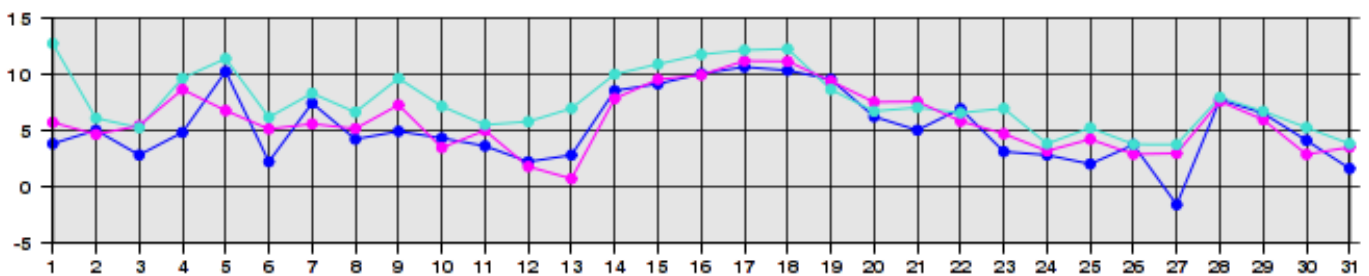
DAILY (midnight to midnight UTC) SUNSHINE HOURS



DAILY (midnight to midnight UTC) MAXIMUM TEMPERATURES

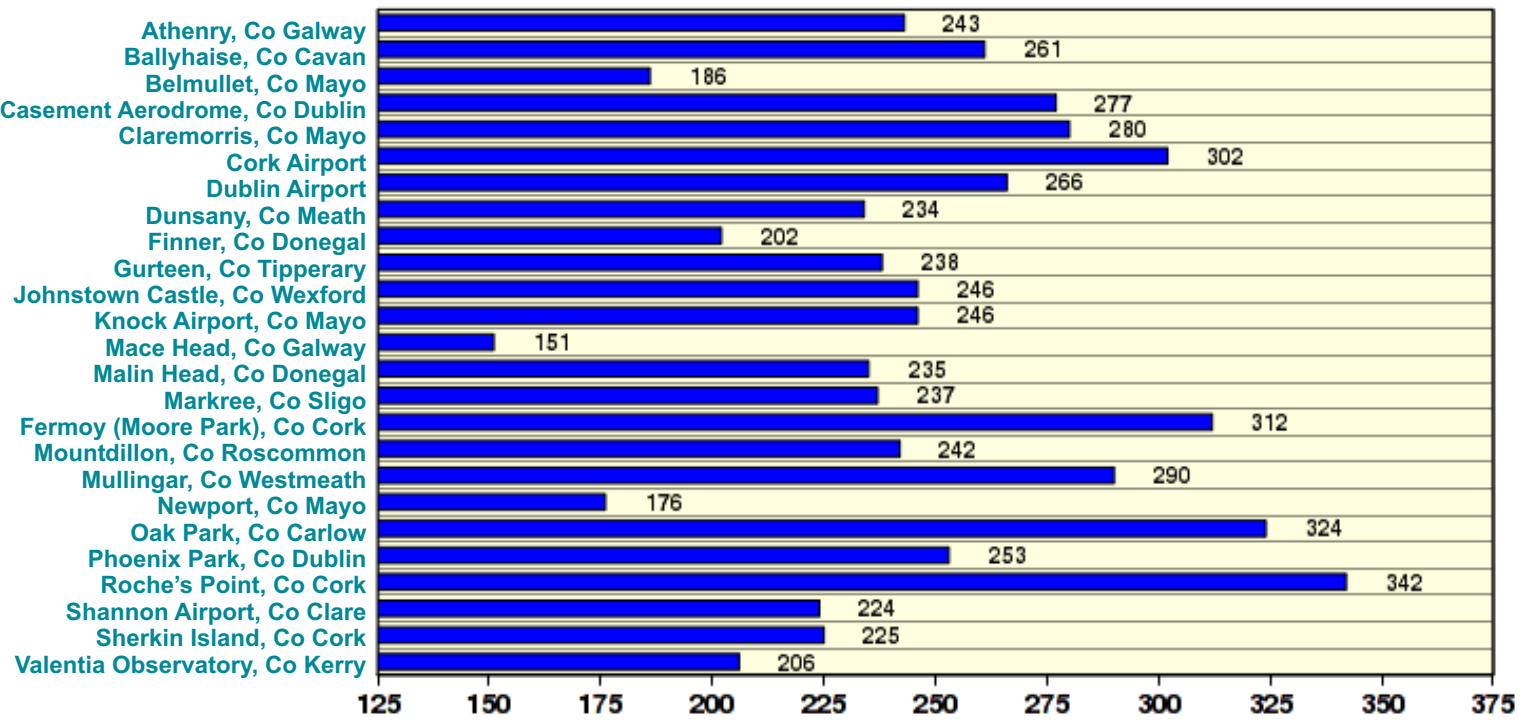


DAILY (midnight to midnight UTC) MINIMUM TEMPERATURES

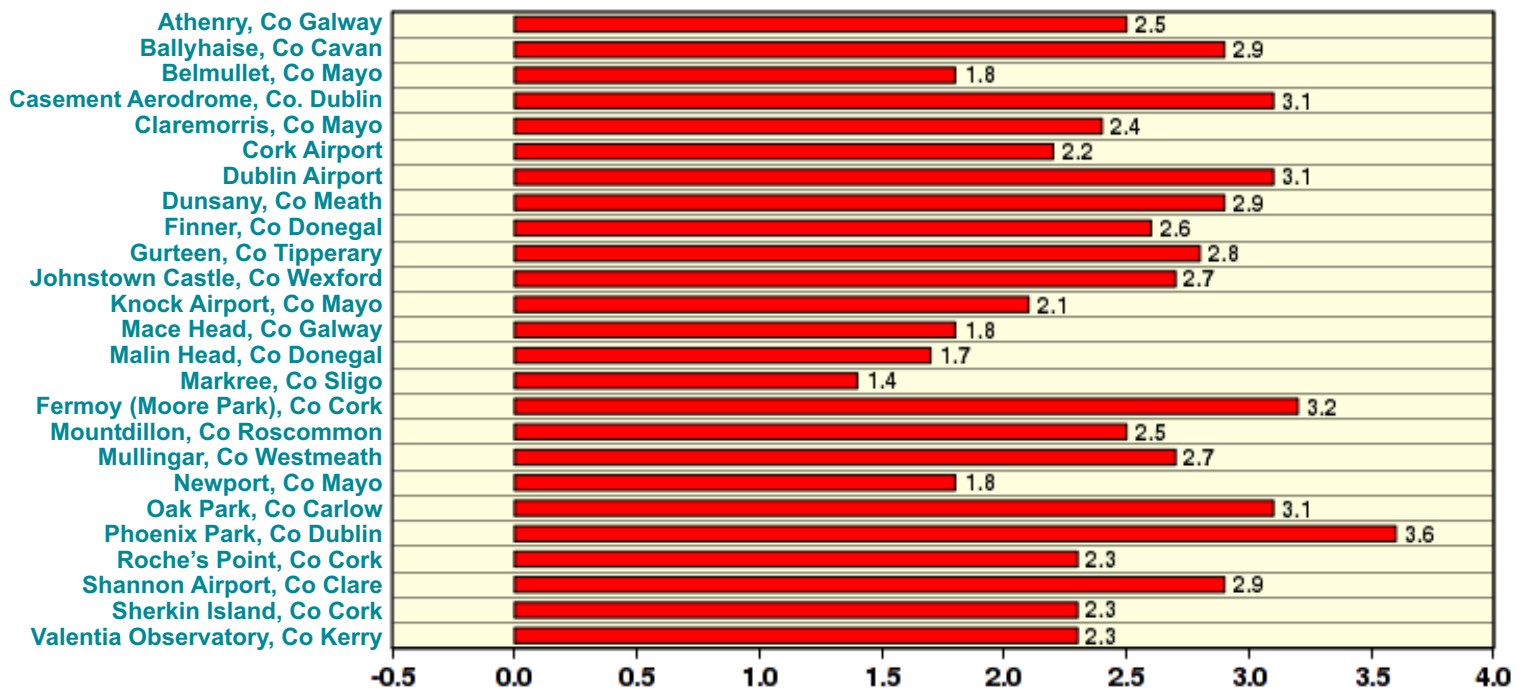


● Valentia Observatory* ● Dublin Airport ● Belmullet*

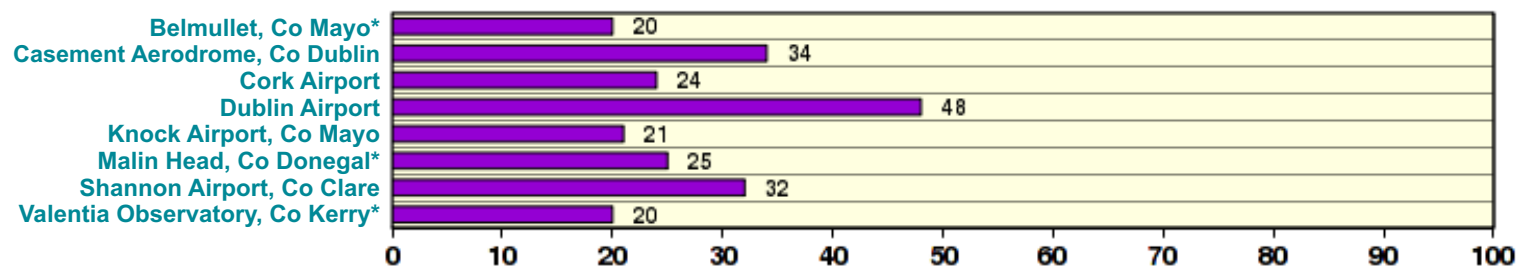
RAINFALL (% OF AVERAGE FOR PERIOD 1981-2010)



TEMPERATURE (°C) (DIFFERENCE FROM AVERAGE FOR PERIOD 1981-2010)



SUNSHINE (TOTAL NUMBER OF MONTHLY SUNSHINE HOURS)



*Issued by the Climatology and Observations Division of Met Éireann on Tuesday, 5th January 2016.
This report is based on available preliminary data from 25 principal weather stations operated by Met Éireann.*

Synoptic station data is midnight to midnight UTC.

Long-Term Averages (LTAs) and "average" refer to the period 1981-2010.

**Sunshine data is from the Autosol Network. LTAs for these sites are currently not used for comparison purposes.*

Follow @metclimate for the latest information on the #winterstorms.

For more information, contact Met Éireann at 01-8064200 or e-mail: climate.enquiries@met.ie